



TAI-SAW TECHNOLOGY CO., LTD.

No. 3, Industrial 2nd Rd., Ping-Chen Industrial District,
Tao-Yuan, 324, Taiwan, R.O.C.

TEL: 886-3-4690038 FAX: 886-3-4697532

E-mail: tstsales@mail.taisaw.com Web: www.taisaw.com

Approval Sheet for Product Specification

Issued Date:

Product Name: SAW Resonator 657.4876 MHz SMD 3.8X3.8 mm

TST Parts No.: TC0265A

Customer Parts No.: _____

Company: _____
Division: _____
Approved by : _____
Date: _____

Checked by: _____ Asin Lin

Approval by: _____ Francis Chen

Date: _____ 2005/4/15



TAI-SAW TECHNOLOGY CO., LTD.

No. 3, Industrial 2nd Rd., Ping-Chen Industrial District,
Taoyuan, 324, Taiwan, R.O.C.

TEL: 886-3-4690038 FAX: 886-3-4697532

E-mail: tstsales@mail.taisaw.com Web: www.taisaw.com

SAW Resonator 657.4876 MHz

Model No.: TC0265A

Rev. No.:1

A. Features:

- 1-Port Resonator.

RoHS Compliant
Lead free
Lead-free soldering

B. Maximum Rating:

- Input Power Level: 0 dBm
- DC voltage: 12 V
- Operating Temperature: -40 °C to +85 °C
- Storage Temperature: -40 °C to +85 °C

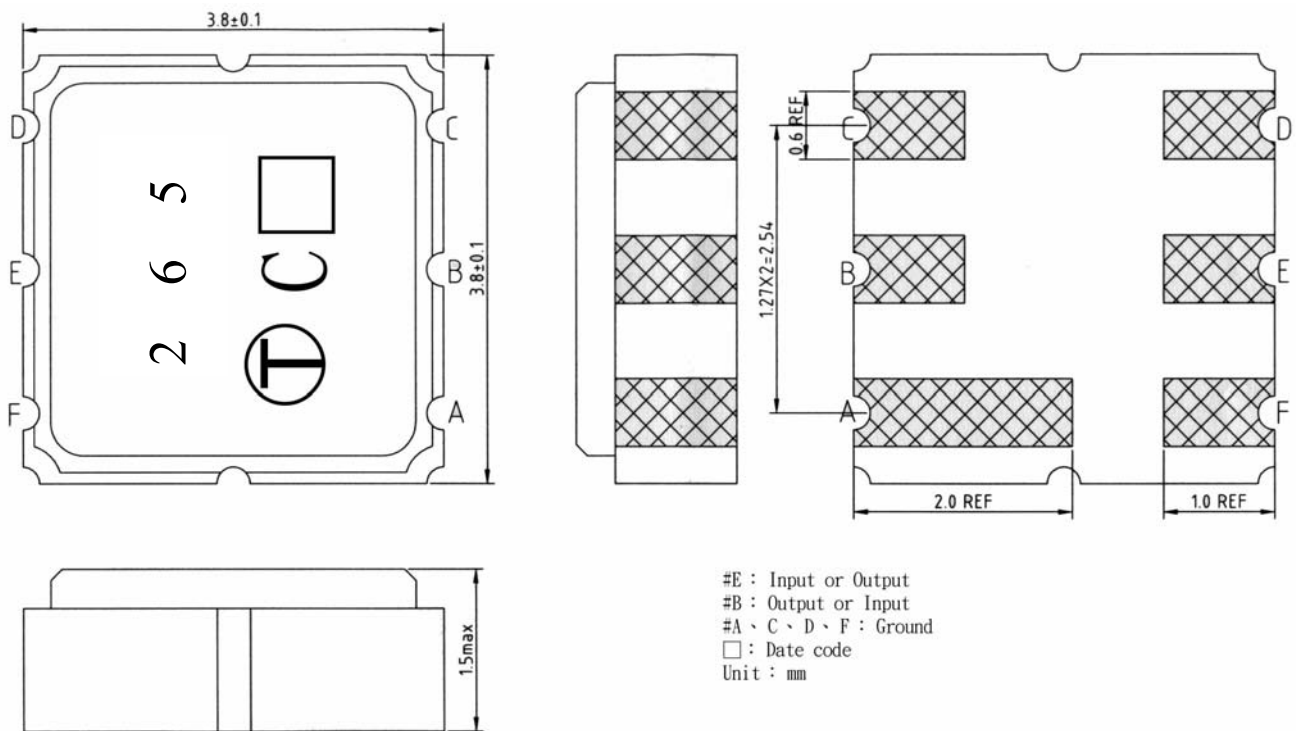
C. Electrical Characteristics:

Reference Temperature $T_A=25\text{ }^\circ\text{C}$

Characteristic	Units	Minimum	Typical	Maximum
Nominal Frequency, f_c	MHz	657.4576	657.4876	657.5176
Insertion Loss, IL	dB	-	1.1	2.5
Aging of f_c	ppm/ yr	-		± 10
Equivalent Circuit Model				
Motional Capacitance, C_m	fF	-	1.778	-
Motional Inductance, L_m	μH	-	32.94	-
Motional Resistance, R_m	Ω	-	12.96	-
Shunt Static Capacitance, C_o	pF	-	2.95	-
Temp. Coefficient.	ppm/ $^\circ\text{C}^2$	-	0.032	-
Turnover Temperature, T_o	$^\circ\text{C}$	10	25	40
Package size		SMD 3.8x3.8x1.2 mm		

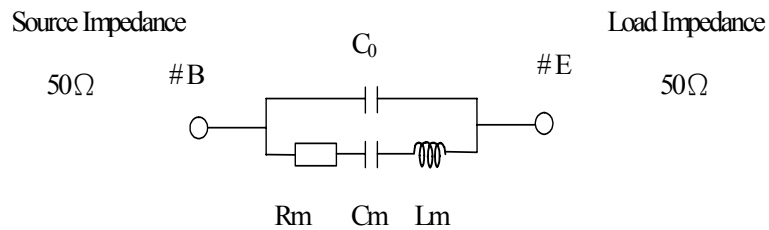
Temperature dependence of f_c : $f_c(T_A)=f_c(T_O)(1+TC_f(T_A-T_O)^2)$

D. Outline Drawing:

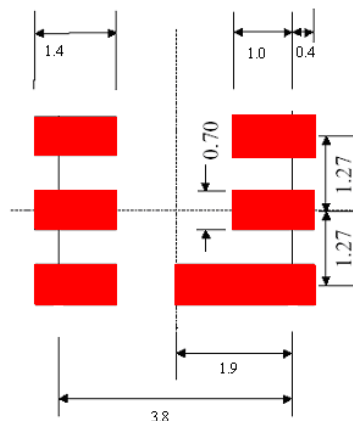


E. Equivalent Circuit Model:

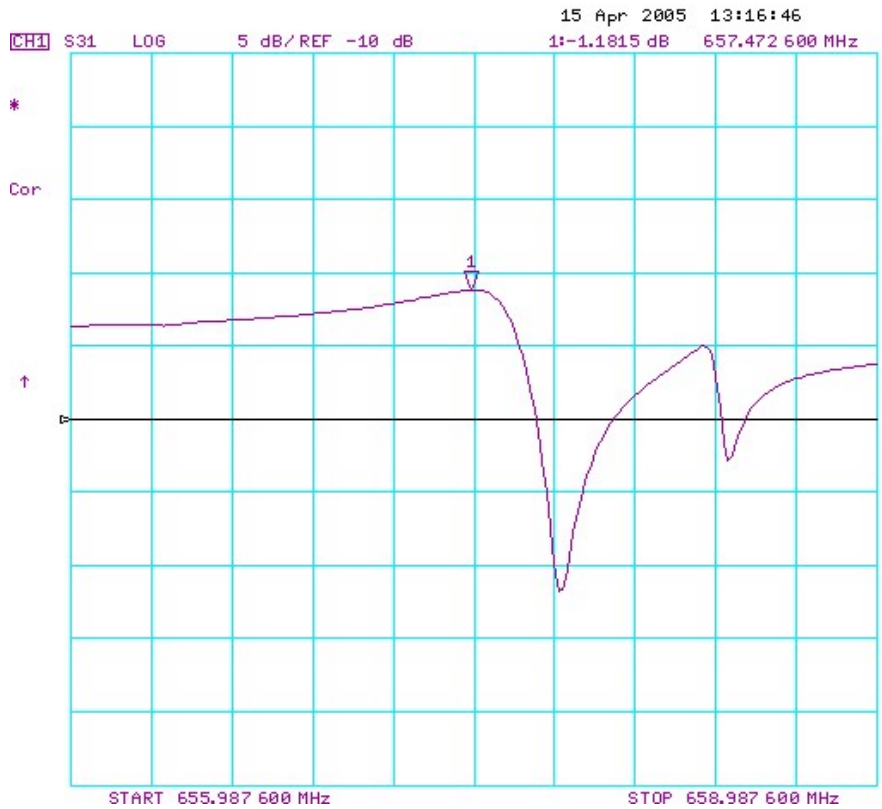
One-Port Resonator:



F. PCB FOOTPRINT

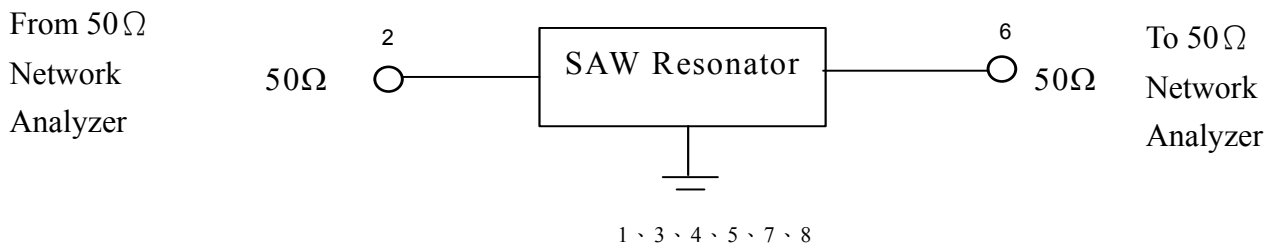


G. Frequency Characteristics:



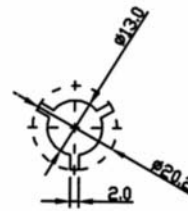
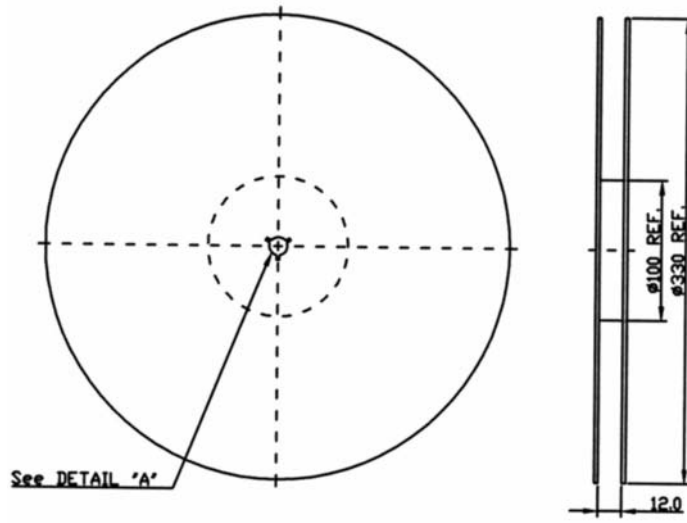
H. Test Circuit:

Network analyzer

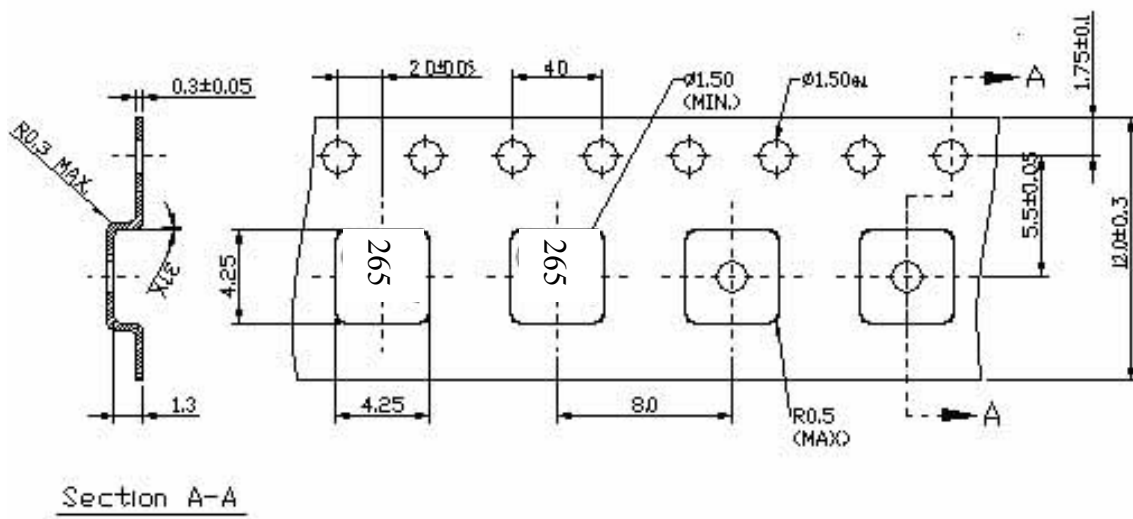


I. Packing:

1. Reel dimension



2. Tape dimension



Section A-A

→
Direction of feed